

# Associated British Ports South Wales

## NOTICE TO MARINERS.

NO 69 of 2024

### Port Talbot Harbour and Approaches Survey Instrument Servicing and Water Sampling

Mariners are advised that ABPmer are scheduled to undertake Survey Instrument Servicing and water sampling in Port Talbot Harbour and Approaches at various locations detailed on the 2<sup>nd</sup> page of this notice (Map and Co-ordinates).

The 2 instruments and seabed frames will be lifted and serviced at the 2 locations M1 and M2A on Wednesday October 23<sup>rd</sup> 2024 between HW 1055hrs and LW 1704hrs.

Vessel will be the “Alec-D” callsign “ZISO5” and they will monitor VHF Channels 12 and 16.

The water sampling will take place on Thursday October 24<sup>th</sup> 2024 between 0700hrs – 1900hrs at 5 locations detailed on the 2<sup>nd</sup> page of this notice.

This notice is issued for and on behalf of ABPmer.

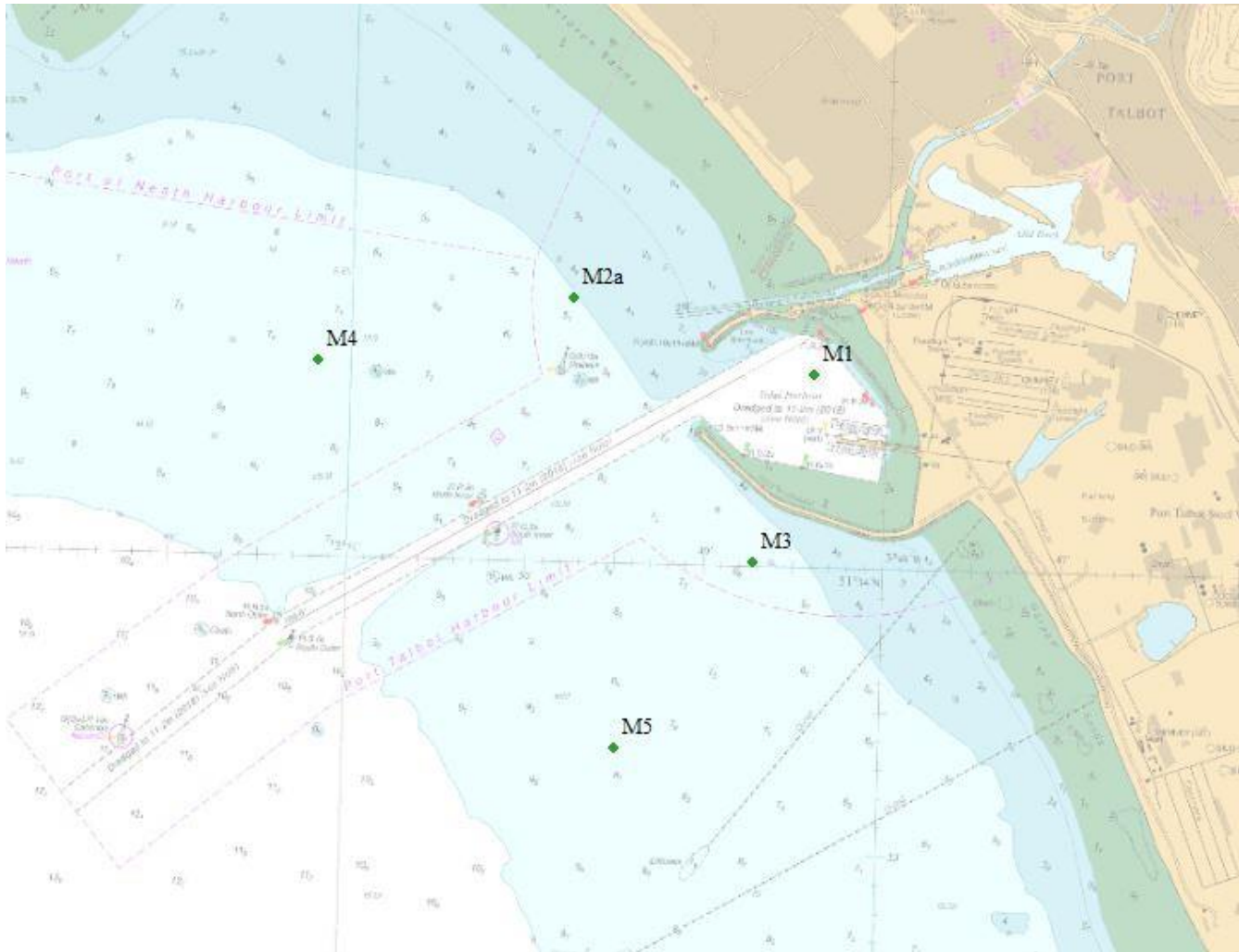
**HARBOUR MASTER SOUTH WALES**  
Queen Alexandra House, Cargo Road, CARDIFF, CF10 4LY

Date 22/10/2024.

All ABP South Wales Notices to Mariners may be viewed on: - [www.southwalesports.co.uk](http://www.southwalesports.co.uk)  
Owners, Agents and Charters should ensure that the contents of this notice are made known to the masters or persons in charge of their vessel or craft.

## Seabed Instrument Servicing Map and Coordinates

Location	Latitude (WGS84)	Longitude (WGS84)
M1	51° 34.671' N	3° 48.406' W
M2a	51° 34.919' N	3° 49.758' W



## Water Sampling Co-ordinates

Location ID	Location requirement	OSTN15		ETRS89 (DM)	
		Easting	Northing	Latitude	Longitude
M1	Turbidity Deployment Water Sampling	274900	188100	51° 34.671' N	3° 48.406' W
M2a	Turbidity Deployment Water Sampling	273350	188600	51° 34.919' N	3° 49.758' W
M3	Water Sampling	274500	186900	51° 34.018' N	3° 48.726' W
M4	Water Sampling	271700	188200	51° 34.681' N	3° 51.177' W
M5	Water Sampling	273600	185700	51° 33.359' N	3° 49.479' W

